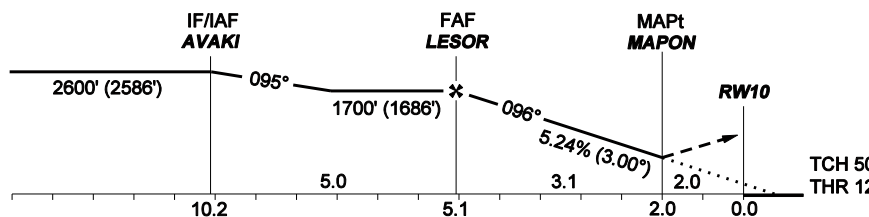


MISSED APPROACH: climbing right turn to 4000' direct ONBED and hold, or as directed by ATC. Maximum 205 KIAS until established direct ONBED if using 700' OCA.



OCA(H)	A	B	C	D	GROUNDSPEED - DESCENT RATE						
LNAV (Note 1 below)	700' (686')	700' (686')	700' (686')	700' (686')	KNOTS	70	90	100	120	140	160
LNAV	770' (756')	770' (756')	770' (756')	770' (756')	FT/MIN	372	478	531	637	743	849
CIRCLING											

1. Missed approach restricted to maximum 205 KIAS until established direct ONBED.
2. GNSS required. DME/DME not authorized.
3. Bearings are magnetic, altitudes and elevation in feet, heights are relative to AD elevation, distance in NM.

CHANGES: "OTMUT" changed to "OTMOT".